

SEA LEVEL RISE

50 FEET

The melting of ice in Antarctica could cause sea levels to rise more than 50 feet by 2500.

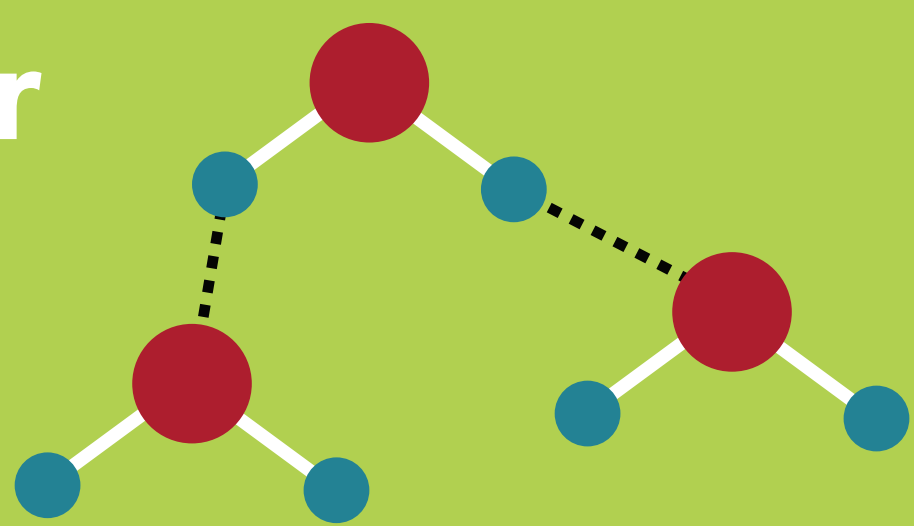
+36,000,000

On the east coast of the United States alone, more than 36,000,000 people, as well as major US cities, will be displaced by rising sea levels.

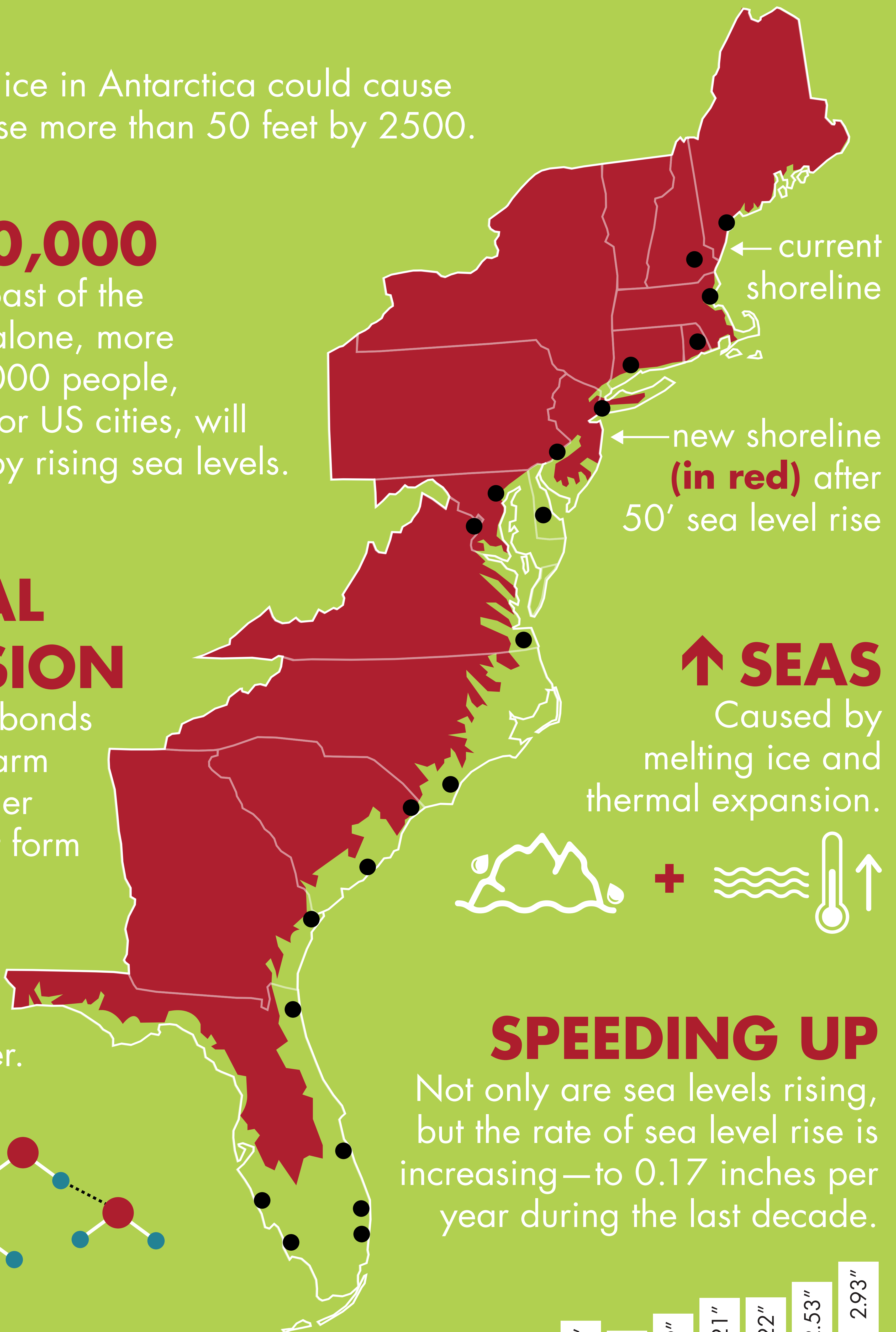
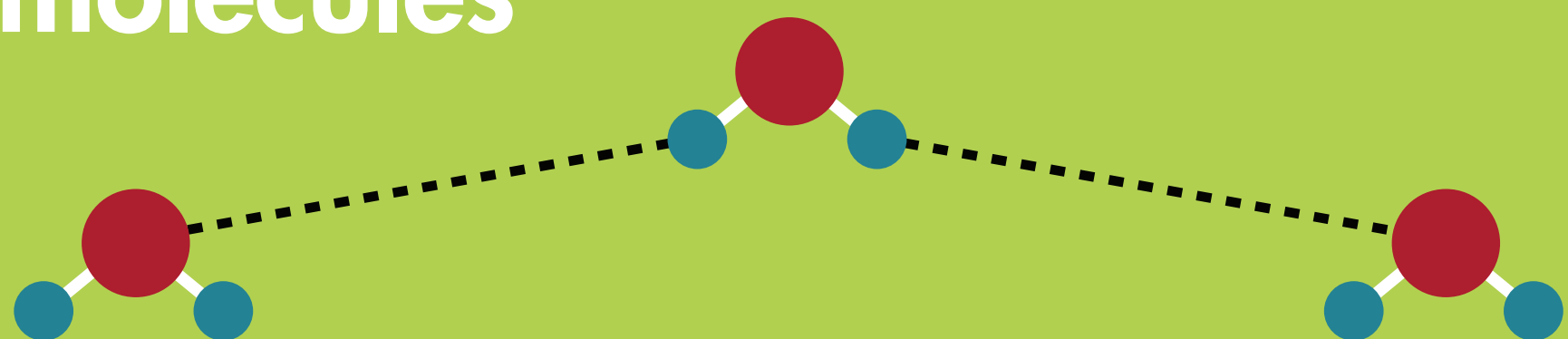
THERMAL EXPANSION

The hydrogen bonds that form in warm water are longer than those that form in cold water. The volume of warm water is greater than cold water.

cold water molecules



warm water molecules



↑ SEAS

Caused by melting ice and thermal expansion.



SPEEDING UP

Not only are sea levels rising, but the rate of sea level rise is increasing—to 0.17 inches per year during the last decade.

